

update

BUFFALO ATLEE WIND FARM

Newsletter / July 2022



Riverhurst Wind Farm, Saskatchewan



Skyway 8 Wind Farm, Ontario

Notice of Construction

Site Preparations Begin at the Buffalo Atlee Wind Farm

Capstone Infrastructure Corporation (Capstone) is pleased to announce that construction is beginning on the Buffalo Atlee 1/2/3/4 Wind Farms (the Project).

The Capstone team has been busy progressing the Project (totaling 61 MW) towards construction since our last update. We have hired the general contractor for the Project and executed a turbine supply agreement with a world-leading manufacturer.

With these critical project elements in place, pre-construction activities will begin the week of July 18, 2022. Crews and equipment are expected to begin arriving on-site in the week of August 1, 2022, with construction activities continuing until November 2023.

The planned construction activities during 2022 include site preparation, access road construction, and turbine foundation construction. We expect wind turbine deliveries to begin in July of 2023 followed by installation, commissioning, and the start of Commercial Operation.

Further details regarding traffic haul routes, traffic management, construction hours, and the project timeline are outlined within this newsletter.

Project Partner

Sawridge First Nation

Sawridge First Nation is Capstone's project partner for the Buffalo Atlee Wind Farm and they have a meaningful ownership interest in the Project. We have been working together since 2018 to successfully obtain key permits and financing.

“This project is a great step for Sawridge First Nation as it helps us move forward in our continued endeavors towards self reliance, while balancing the need for energy and protecting Mother Earth for our future generations”

Chief Roland Twinn, Sawridge First Nation

The Sawridge First Nation an original signatory to Treaty No. 8 (in 1899), and is a self-determining, innovative, progressive, and prosperous nation of Cree people who continue to govern in a harmonious and balanced way. This Nation is inclusive of all members, values relationships, customs, and traditions, and respects both maintaining culture and environment for future generations. Sawridge adopted its own Constitution on August 24, 2009.

Project Contractor

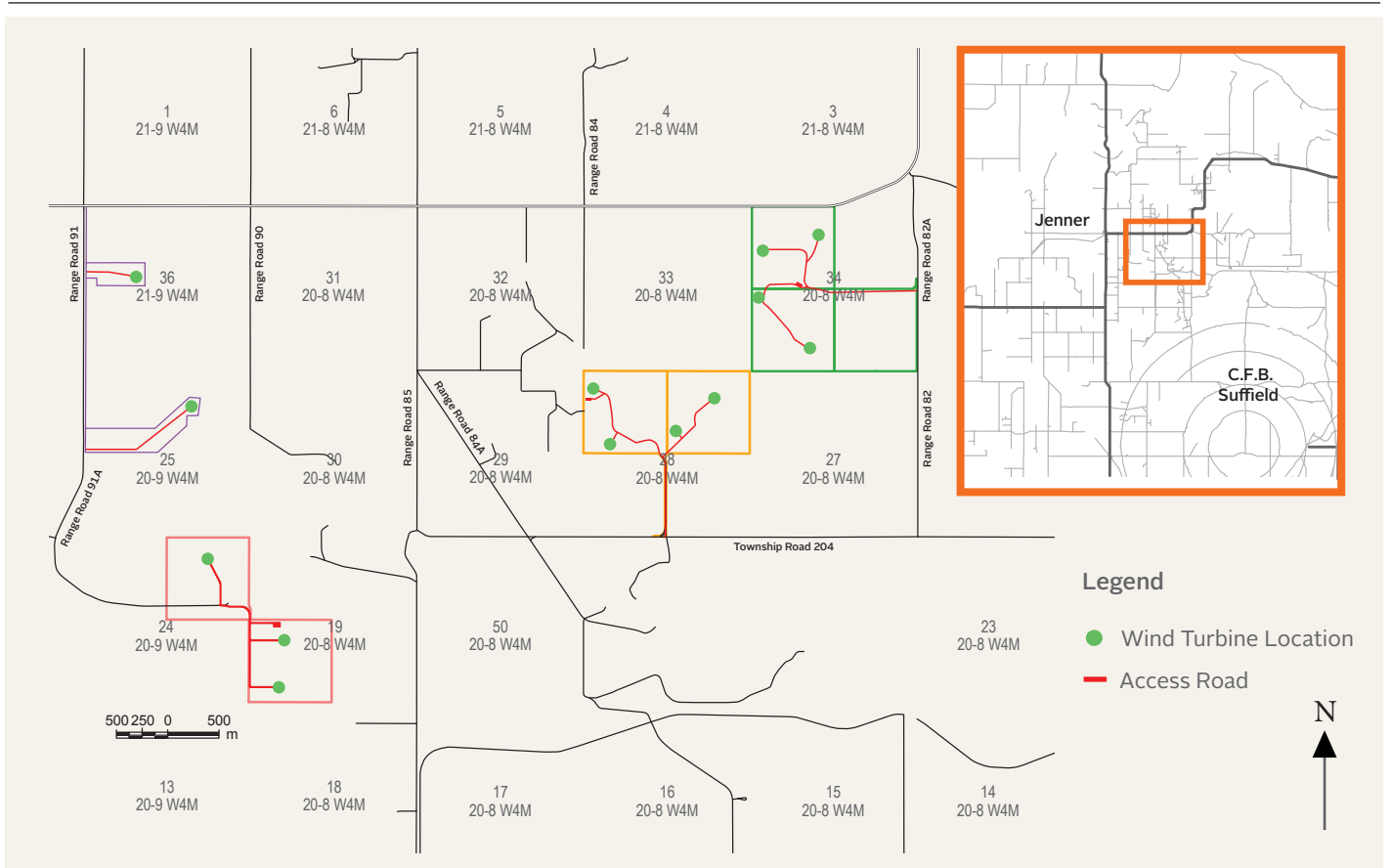
Bird Construction

As a leading builder in Canada with offices coast-to-coast, Bird Construction has been providing construction services to a long list of new and repeat clients since 1920. Reflecting its broad scope, Bird's clients include leading firms in the energy, renewables, industrial, mining, commercial, institutional, retail, multi-tenant residential, water and wastewater, nuclear, and civil sectors.

At Bird, safety is an essential component of everything they do. Their holistic health and safety culture is rooted in a commitment to work in a spirit of collaboration with all employees, trade contractors, clients, and suppliers to foster the healthy and safe work environment that ensures everyone goes home safe every day.

Bird upholds these high standards through an engaged workforce and vigilant processes that create a culture of complete accountability and personal responsibility. Bird has managed to achieve this workplace culture because of the deep-rooted personal commitment to safety at all levels in the organization.

Site Map



Project Updates

Equipment and Technology Selection

Since the Project received AUC approval, Capstone has competitively tendered the wind turbine selection and executed a Turbine Supply Agreement with world-leading manufacturer Siemens Gamesa Renewable Energy Inc. to provide 13 SG 5.0-145 turbines for the Buffalo Atlee Wind Farm.

These turbines are the most modern version of the SG-145, with a shorter overall height and reduced noise and shadow impacts to the surrounding area. The hub height of the new turbine model is 95.5m, compared to 127.5m in the Project's earlier design. The updated Noise Impact Assessment is available by mail upon request or immediate download on the Project website: www.buffaloatlee.com.



Amherst Wind Farm, Nova Scotia

Construction Hours

Construction activities will generally be conducted between the hours of 7 a.m.-5 p.m., with supervisors onsite from 6:30 a.m. – 5:30 p.m. However, specific activities may take place outside of this window. For example, activities that are affected by inclement weather, high winds, or installation of a major component that must be completed to ensure the health and safety of site workers.

Construction Traffic Management

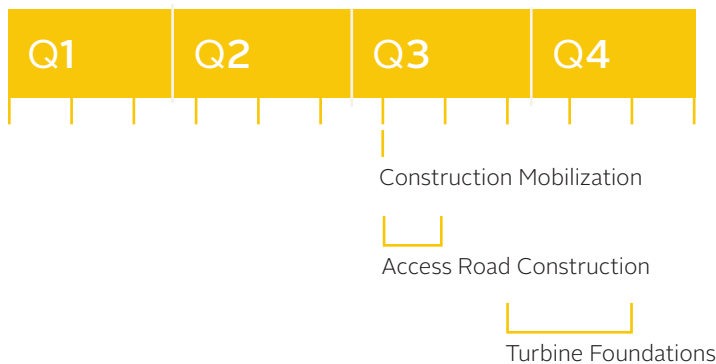
During construction, traffic volume on local roads will increase in peak periods due to equipment and material deliveries to site. A site-specific management plan has been developed to mitigate potential hazards and coordinate road use. We are aware of other construction activities in area, including the Jenner Wind Farms, and Bird will be coordinating with their contactors. A dedicated haul route for the turbine deliveries in 2023 is outlined in the map on Page 4.

Traffic control will be managed by Bird Construction, including the use of construction signage, reduced driving speeds for construction traffic, and dust suppression.

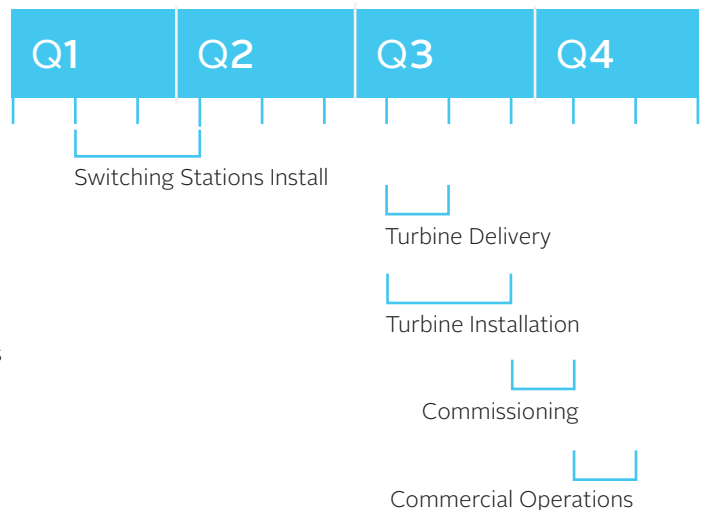
Capstone has zero-tolerance for speeding or distracted driving, and kindly asks that any concerns be directed to the Owner's Representative.

Project Timeline

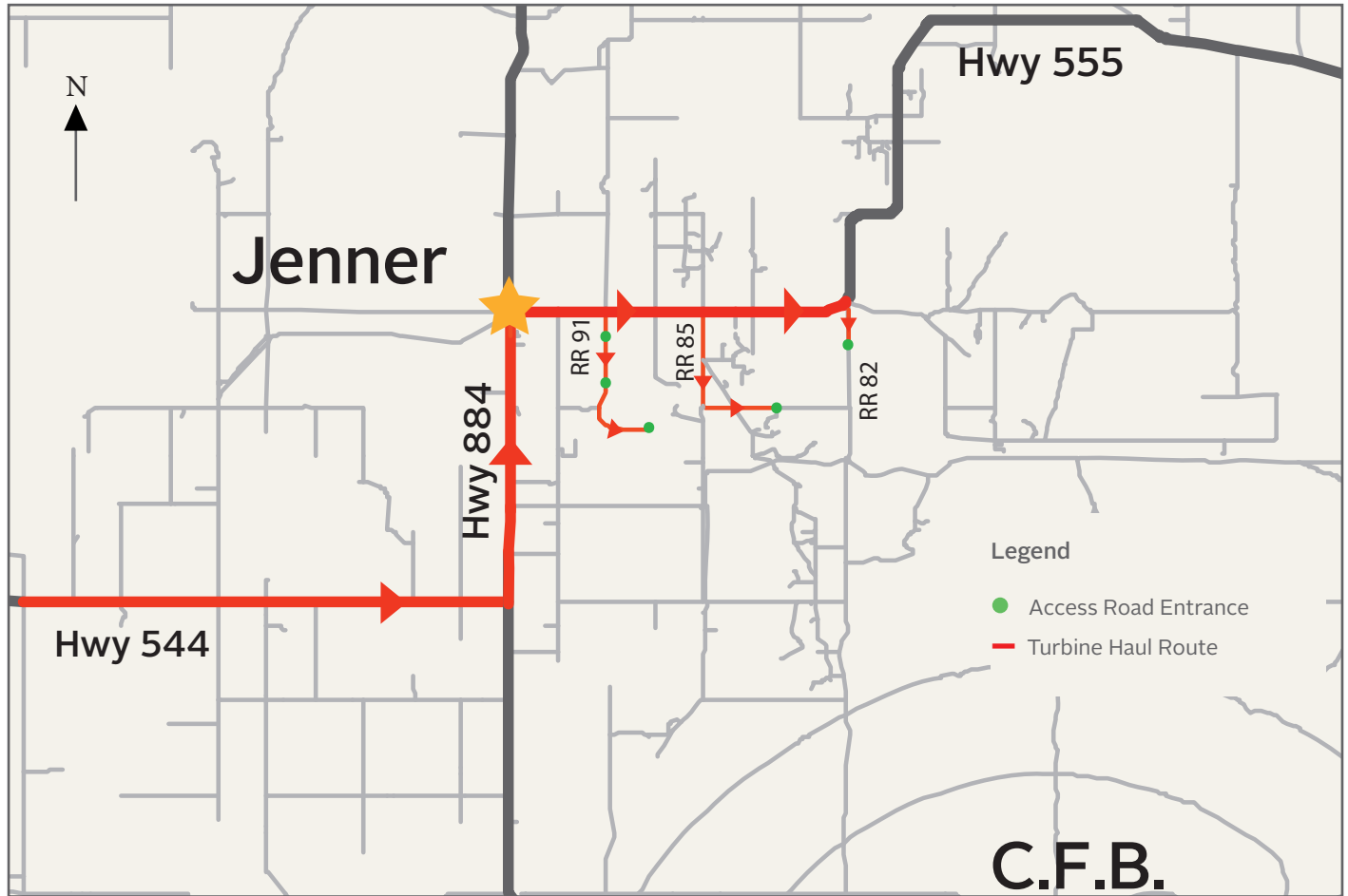
2022



2023



Haul Route for Turbine Delivery (2023)



Get in touch with us!

For any project questions or comments, please contact:

Joel Baldwin Owner's Representative
 jbaldwin@capstoneinfra.com
 204-621-7069
www.buffaloatlee.com

Buffalo Atlee Wind Farms
 c/o Capstone Infrastructure Corporation
 155 Wellington Street West, Suite 2930
 Toronto, Ontario M5V 3H1
www.capstoneinfrastructure.com

About Capstone Infrastructure

Clean and renewable energy is our business, and our people are our greatest asset. We're here to drive the energy transition forward through creative thinking, strong partnerships, and a commitment to doing things right.

Capstone is a publicly traded, independent power producer headquartered in Toronto, Canada, focused on providing clean, renewable energy to homes and businesses across North America. We own and operate a diversified portfolio of 30 utility-scale renewable and clean power generation facilities with more than 775 MW of gross installed capacity and are actively developing a portfolio of clean power projects in Canada and the United States.

Call or visit us online to learn more.

